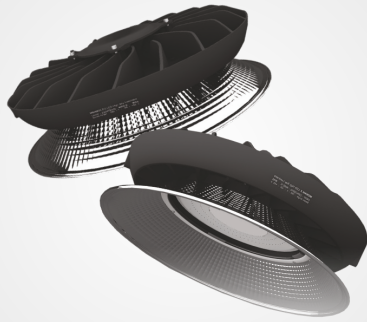
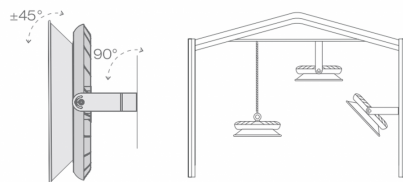
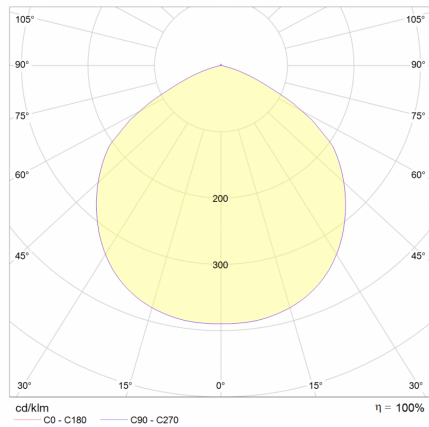
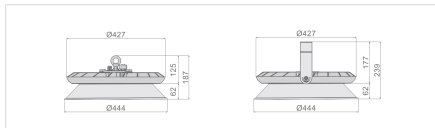


## Merikh ۲-i



**3 YEARS GUARANTEE**



### Electrical Characteristics

Parameter	Value
Parameter	200W
Nominal Input Voltage And Frequency ( V-AC/Hz )	230/50
Input Voltage And Frequency Range ( V-AC/Hz )	200-240/50-60
Nominal Input Power ( w )	200W
Nominal Input Current ( A@V )	230@0.97
Power Factor	0.9
Led Module Operating Voltage ( v-dc )	264
Total Harmonic Distortion ( THD )	≤ 60%
Led Module Type	Integrated
Class Of Protection Against Electric Shock ( v230 )	I

### Optical Characteristics

Parameter	Value
Parameter	200W
Light Source Led	SMD LED
Number Of Leds In The Module Pcs ( pcs )	220
Nominal Power Of Led W ( w )	1.5
Luminous Flux ( Lm )	23000
Luminous Efficiency ( Lm/W )	115
Color Temperature ( k )	3000,4000,5000,6500
Color Rendering Index	75
Sdcm Initial And Value	5SDCM
Photometric Code	730/559,740/559,750/559,765/559
Lumen Maintenance Code	9
Light Distribution Angle ( degrees )	100°

### Mechanical Characteristics

Ingress Protection ( IP )	Ip65
Body Material	Die-casti Aluminum
Diffuser Material	Tempered glass
Body Coating	Electrostatic powder paint
Weight ( Kg )	4.7-5.5

### General Characteristics

Rated Ambient temperature ( c° )	25
Working Temperature Range ( c° )	40+~20-
Maximum Allowed Humiding ( % )	95
Rated Median Useful Life ( L70B10)(hrs )	70000
Rated Abrupt Failure Value ( % )	15

### Product Code

Power ( w )	200W
Code	411410